

## Native Women

Colonial pressure for distinctive pictorial stamps resulted in the printing of the Native Women issue in 1907. Puyplat, who prepared the final designs, selected seven formats with the lower values sharing two designs.

Although not well received in general, the same basic stamps, with modifications, remained in use until 1927.



## ANNAMITE WOMAN



## CAMBODIAN WOMAN

Native Women



CAMBODIAN WOMAN



CAMBODIAN  
WOMAN



ANNAMITE  
WOMAN



MUONG  
WOMAN



LAOTIAN  
WOMAN



TONKINESE  
WOMAN

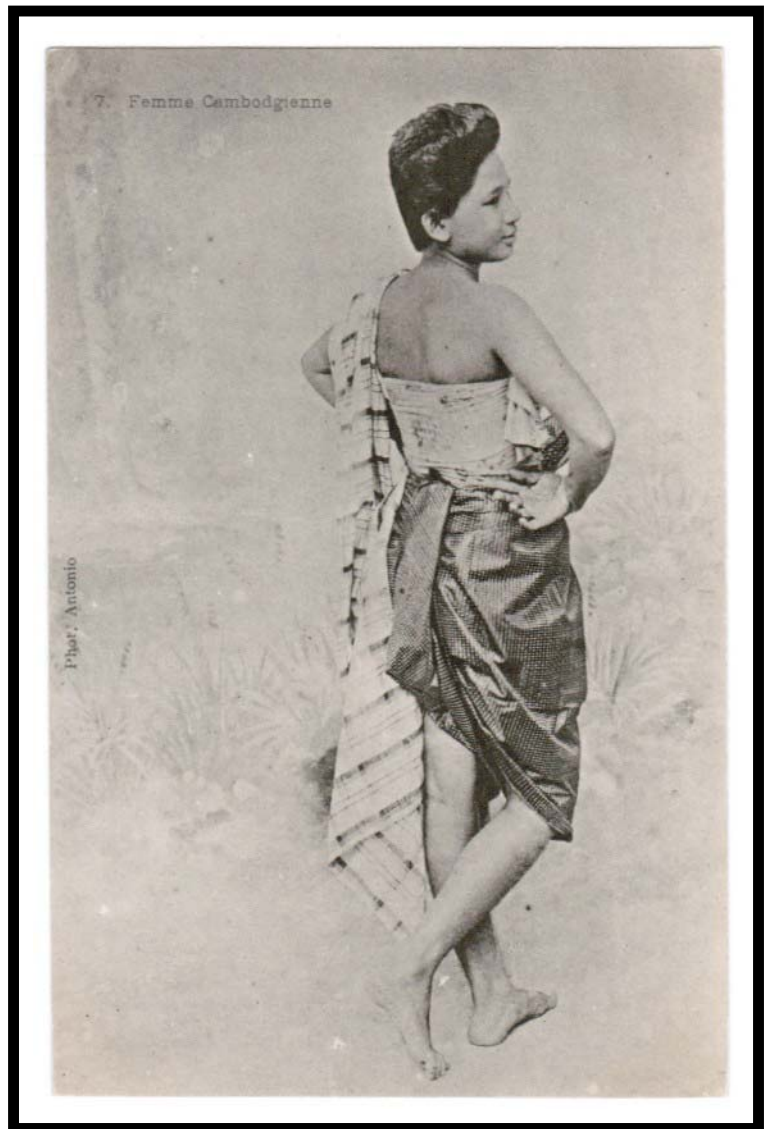
## Native Women Design Subjects

The low values of the definitive stamps picture an Annamite woman. The young lady shown on this postcard bears a striking resemblance to the portrait found on the low value stamps.



## Native Women Design Subjects

Engraver Puyplat, who was based in Paris, took his inspiration for the Native Women designs from contemporary postcards. The 75 centime value demonstrates how he created a brand new background around a central figure.





## Native Women Design Subjects

The Native Women stamps were regarded as emblems of an exotic and far away land. A combined photography and philately exposition in 1911 was promoted with postcards that overlaid a replica of the 1 franc Native Woman value on a panorama of Dijon.



POSTAL MARKINGS  
EXPOSITION-PHILATELIQUE DIJON 28-5 11

## Native Women Design Subjects

For the 2 franc value, the designer did not attempt to relay the elaborate detail of the Muong woman's dress in the small postage stamp format.



## Native Women Design Subjects

Another period postcard provides a more detailed look at the Muong woman who ultimately became the subject depicted on the 2-franc value.





## Native Women Design Subjects

The enclosure that the Laotian woman was leaning against was transformed into a fence for the 5 franc value.





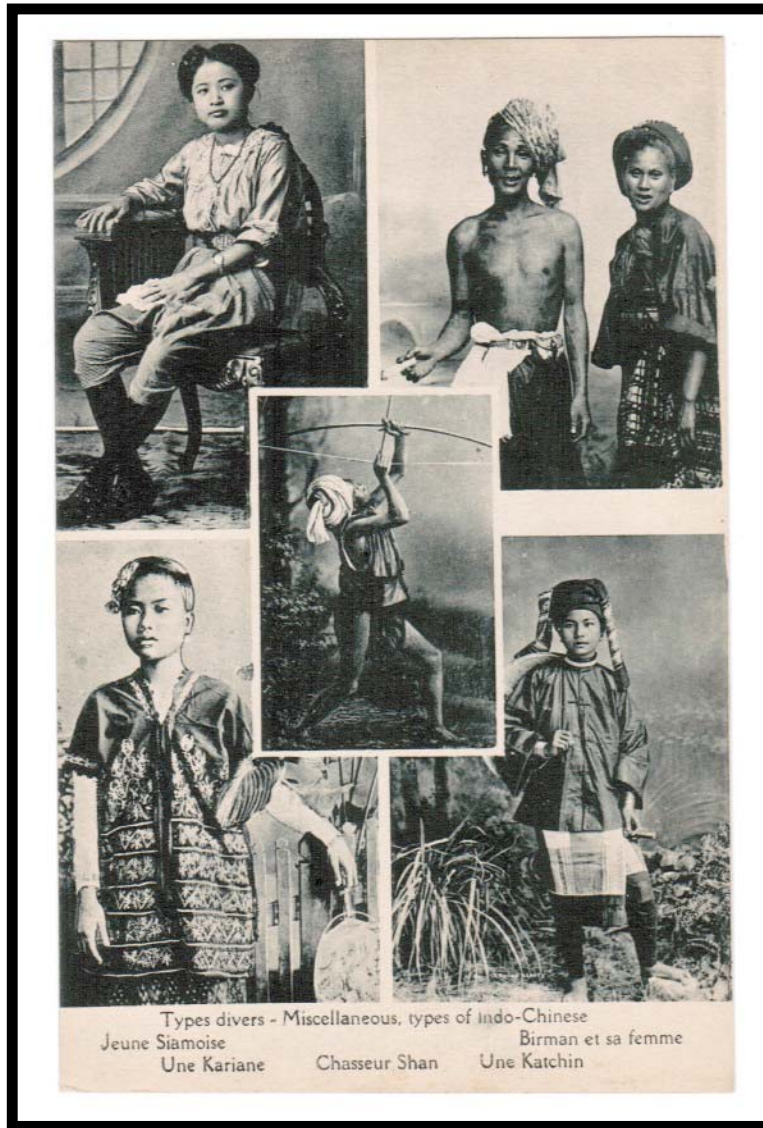
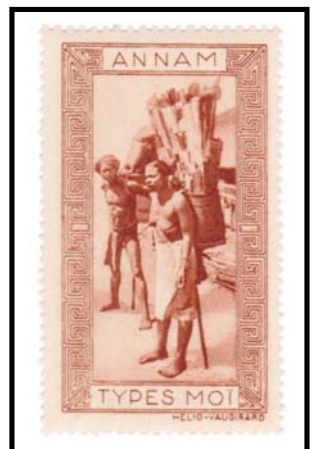
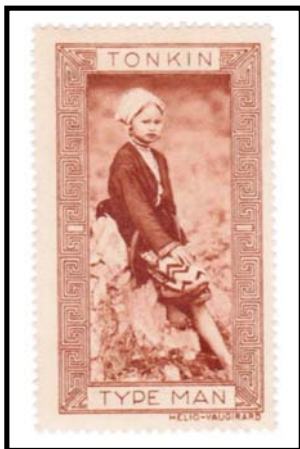
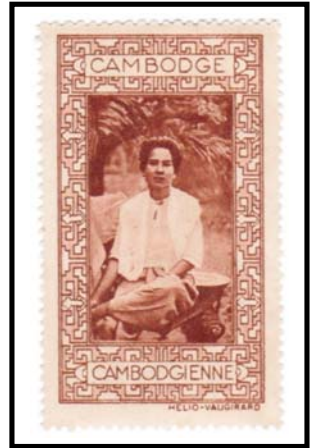
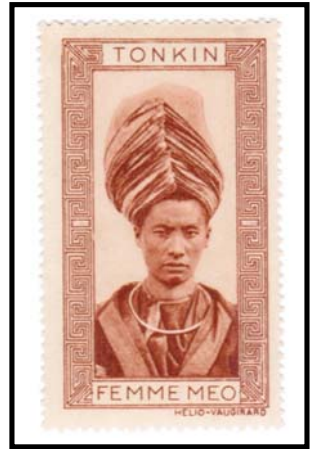
## Native Women Design Subjects

A turn-of-the-century photograph served as the inspiration for the design of the 10-franc stamp. In the photograph, the seated woman holds the shaft of a large umbrella. In the stamp, the umbrella became a large hat on the head of the standing woman.

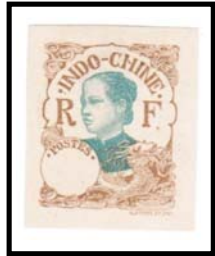


# Native Women Labels

Tourism labels depict the ethnic diversity among Indochinese women.



Native Women  
Annamite Proofs



EMPTY  
VALUE PLUG



FILLED  
VALUE PLUG



DESIGN USED ON CIGARETTE CARD

Native Women  
Annamite Proofs





Native Women  
Cambodian Proofs



FILLED  
VALUE PLUG



EMPTY  
VALUE PLUG

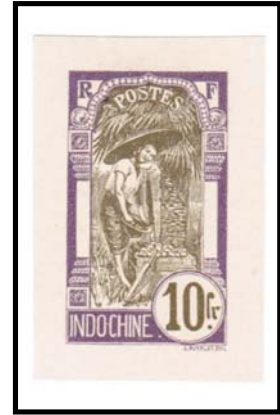


WITH  
VALUE PLUG



EMPTY VALUE PLUG

Native Women  
High Value Proofs



Native Women  
Proof of 1 franc

An imperforate proof shows the design's as-issued colors of red and black.



Native Women  
Perforation Varieties



ZIGZAG



IMPERFORATE



Native Women  
Printing Varieties



NORMAL "c"



PARTIAL "c"



FLATTENED "c"



"BLIND EYE"



Native Women  
Color Shades



Native Women  
Color Shades



Native Women  
Printing Registrations





Native Women  
Printing Registrations



Native Women  
Millesimes



Native Women  
Millesimes



Native Women  
Postmarks on 10 centimes

ANNAM



BA-DON



BANMETHUOT



BINH-DINH



CUARAO



DALAT



FAIFO



HUE



PHANRANG



PHANTIET



QUANGTRI



QUANG-NGAI



QUINHONE



THANH-HOA



TOURANE

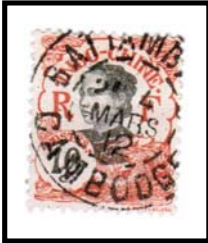


VINH



Native Women  
Postmarks on 10 centimes

CAMBODIA



BATTAMBANG



KOMPONG-TIAM



PNOMPENH



SIEMREAP ANGKOR



STUNG TRENG



TAKEO

CHINA



C. CANTON CHINE



MONGTSEU

Native Women  
Postmarks on 10 centimes

COCHINCHINA



BACLIEU



BATRI



BIENHOA



CAIBE



CAIRANG



CAMAU



CANGIOC



CANTHO



CAP ST. JACQUES



CHOLON



CHOLON-BINH TAY



LOC NINH



CULAOGIEN



GIADINH

Native Women  
Postmarks on 10 centimes

COCHINCHINA



LONGXUYEN



MYTHO



RACHGIA



SADEC



SAIGON-CENTRAL



SAIGON-PORT



TANCHAU



TAYNINH



THOI THUAN



TINH-BIEN



TRAON



TRAVINH



VINHLONG



VUNGLIEM

Native Women  
Postmarks on 10 centimes

TONKIN



BAC-LE



BAC-NINH



BAOLAC



CHAPA



CHIEMHOA



DAPCAU



DONG-DANG



HAIDUONG



HAIPHONG



HANOI



HANOI-GARE



HON-GAY



HONG-HOA



KHAO-SON



Native Women  
Postmarks on 10 centimes

TONKIN



KIEN-AN



LACQUAN



LANG-SON



LAOKAY



NGUYEN-BINH



PHAT-DIEM



NAM-DINH



NINH-BINH



NUI-DEO



PHUC-YEN



PHU-DOAN



PHU-LANG-TUONG



PHU-THO

Native Women  
Postmarks on 10 centimes

TONKIN



PHU-LY



POINTE PAGODE



PORT WALLUT



QUANGYEN



SEPT PAGODES



TA-LUNG



TAM-DAO



THAI-BINH



TUYENQUANG



VIETTRI



VINHYEN



YENBAY

Native Women  
Postmarks on 10 centimes

LAOS



ATTPOPEU



HOUETSAI



LUANG-PRABANG



VIENTIANE



PAKSE



SAVANNAKHET

Native Women  
Postmarks on 10 centimes

RAILROAD



VINH A HANOI



VINH A HANOI



VINH A HANOI



VINH A HANOI



LANGSON A HANOI



LANGSON A HANOI



LANGSON A HANOI



HANOI-LANGSON



SAIGON A PHANRANG



SAIGON A MYTHO

MARITIME



YOKOHAMA A  
MARSEILLE



YOKOHAMA A  
MARSEILLE



LIGNE N



LIGNE N



Native Women  
Postmarks on 5 centimes



HANOI

Native Women  
Postmarks on Smaller Values

ANNAM



BAN ME THUOT



BENTHUY



BINH-DINH



FAIFO



HUE



NINH-CHU



QUANGTRI



QUINHONE



TAM-KY



THANH-HOA



TOURANE



VINH

Native Women  
Postmarks on Smaller Values

COCHINCHINA



BACLIEU



BAIXAU



BENTRE



CANTHO



BIENHOA



CAP ST. JACQUES



CHAUDOC



CHOLON



CHOLON-BINH TAY



CHOQUAN



GIADINH



GOCONG



LAITHIEU

Native Women  
Postmarks on Smaller Values

COCHINCHINA



LONGMY



LONGXUYEN



MYTHO



POULO-CONDORE



SADEC



SAIGON B



SAIGON-CENTRAL



SAIGON-PORT



SAIGON A



SOCTRANG



THUDAUMOT



TRAVINH



Native Women  
Postmarks on Smaller Values

TONKIN



BACNINH



BAC-NINH



BINHLIEU



CHIEMHOA



DAPCAU



HAGIANG



HAIPHONG



HANOI



HANOI CHATEAU D'EAU



HANOI R.P.



HANOI-GARE



HONGAY



HONG-HOA

Native Women  
Postmarks on Smaller Values

TONKIN



LANG-SON



LANG-SON



LAOKAY



MONCAY



NGUYEN-BINH



NAM-DINH



PHA-LONG



PHAT-DIEM



PHULY



PHU-DOAN



PHU-NINH GIAM

Native Women  
Postmarks on Smaller Values

TONKIN



PHU-THO



PAKHA



PORT WALLUT



QUANG-YEN



SEPT PAGODES



SONTAY



TAM-DAO



THAI-BINH



THAINGUYEN



TRAI-HUT



TUYENQUANG



VANLY



VIETTRI



VINH-THUY

Native Women  
Postmarks on Smaller Values

CAMBODIA



BATTAMBANG



KAMPOT



PNOMPENH



SOAIRIENG



STUNG-TRENG

LAOS



HOUEISSAI



KENKABAO



LUANG-PRABANG



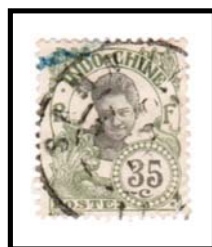
MOUNG-HOUN-  
XIENGHOUN



MUONG-HOU-NUA



VIENTIANE



SAMNUA



SAVANNAKHET



Native Women  
Postmarks on Smaller Values

HONG KONG



OFFICES IN CHINA



CANTON



CANTON



CANTON



FORT BAYARD



FORT BAYARD

RURAL



# Native Women Postmarks on Smaller Values

## RAILROAD



LANGSON A HANOI



LANGSON A HANOI



HANOI A HAIPHONG



HANOI A HAIPHONG



YUNNANFOU A  
AMITCHEOU



HANOI A HAIPHONG

## MARITIME



YOKOHAMA A  
MARSEILLE



YOKOHAMA A  
MARSEILLE



YOKOHAMA A  
MARSEILLE



SAIGON  
PAQUEBOT



VAPEUR N° 25  
COCHINCHINE



LIGNE N  
PAQ. FR. N° 8

Native Women  
Postmarks on High Values

ANNAM



HUE



TOURANE



VINH



VINH

CAMBODIA



PNOMPENH

LAOS



ATTOPEU



LUANG-PRABANG



XIENG-KHOUANG

Native Women  
Postmarks on High Values

COCHINCHINE



BACLIEU



CANTHO



CAP ST. JACQUES



CHOLON-BINH TAY



CHOLON



CHOLON



HONQUAN



MYTHO



POULO-CONDORE



RACHGIA



SAIGON-CENTRAL



SAIGON-PORT



Native Women  
Postmarks on High Values

TONKIN



BAC-NINH



DINH-LAP



HAIPHONG



HANOI



HANOI



HANOI GARE



HONGAY



KIEN-AN

Native Women  
Postmarks on High Values

TONKIN



LACQUAN



LANG-SON



LANG-SON



MONCAY



SONTAY



TUYEN-QUANG



TUYEN-QUANG



VANLY

Native Women  
Postmarks on High Values

CANTON



HONG KONG

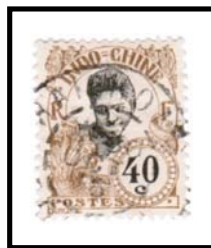


MARITIME



Native Women  
Postmarks

HAIPHONG





Native Women  
Postmarks

HANOI



Native Women  
Postmarks

SAIGON-CENTRAL



Native Women  
Postmarks

SAIGON-PORT



Native Women  
Perfins



B.C.

Banque de l'Indochine (Hanoi Branch)



D.F.

Denis Freres



G.M.R.

Grand Magasins Reunis



Native Women  
Perfins



Hong Kong and Shanghai Banking Corporation



Unknown Company



L'Union Commerciale Indo-Chinoise